

LAND ROVER OWNERS' CLUB

OF GIPPSLAND

SEPTEMBER / OCTOBER 2023 NEWSLETTER



GIPPSLAND LAND ROVER

535 PRINCES HIGHWAY, TRARALGOON (03) 51721100

GIPPSLAND'S HOME OF LAND ROVER

Proud sponsors of the Land Rover Owners Club of Gippsland





LAND ROVER OWNERS' CLUB OF GIPPSLAND

P.O. Box 554 Traralgon 3844 Telephone 03 51721100 Club website lrocg.jimdo.com



A couple of pictures of Champions in Adelaide, taken in 1954. The first picture shows the Service Division, the second the showroom. Champions were the Land Rover Distributors for South Australia for many years. As well as Land Rover, other brands that Champions dealt with were Rover, Fiat, Simca, Citroen, Studebaker and Mack.



This month's cover; David Murray's series 2A ex-army Land Rover, seen at the Land Rover 75th Birthday Trip

LROCG Meeting
 Don't forget that our next meeting will be held on Monday 13th November; This will be our AGM, and will be held at Gippsland Land Rover, at 8pm.



Land Rover Owners Club of Gippsland		
2022-- 2023 Committee		
President	Alan Harlow	0419 530 117
Vice President	Neville Trimnell	
Minute Secretary	Tonee Harlow	
Treasurer	John Kerr	
Publicity Officer	Charlie Calafiore	03 5172 1100
Secretary	Charlie Calafiore	03 5172 1100
Events CoOrdinator	Alan MacRae	
Editor	Eric Shingles	03 56232 501
Property Officer	Ross Howell	
4WD Vic Delegate	Neville Trimnell	
Webmaster	Alan Harlow	0419 530 117
Life Member's	Ray Massaro, Greg & Lois Rose, Charlie Calafiore,	

IF YOU CAN'T SEE THE NUMBER, YOU:

		
ARE TIRED	ARE SAD	NEED LOVE
		
NEED ANOTHER LAND ROVER	NEED A VACATION	ARE HUNGRY

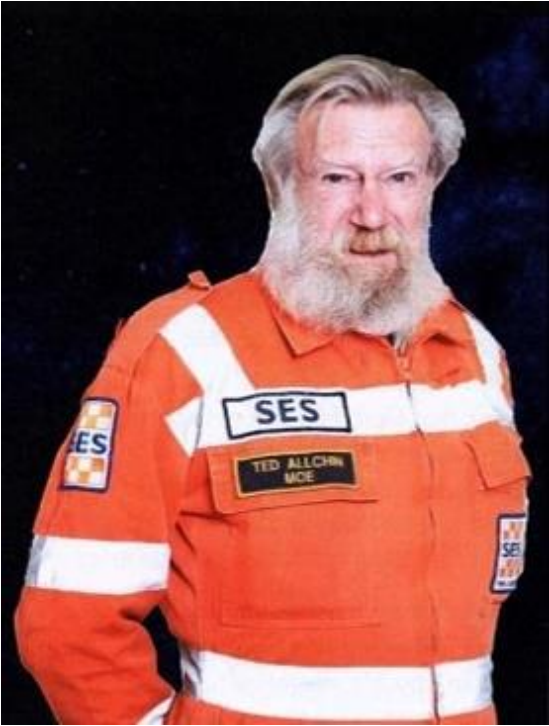
Vale
Shirley Joyce Little
26th October 1934 — 14th August 2023

Shirley Little of Nicholson, formally of Traralgon passed away peacefully on 14 August 2023, aged 88 years. Loved wife of Don (dec). Mother of Saul (Russ), Susan and Christine. Mother-in-law to Ken and Warren. Grandma of Daniel, Leigh, Wade, Anne-Maree, Jaclynn, Stephanie, Brittany, and Amy and 20 great grandchildren.
A social butterfly who was always there



Vale
Edward (Ted) Glover Allchin
1st May 1944—10th September 2023

Alan Harlow spoke at Ted's funeral on behalf of the LROCG. I met Ted in 2009 when I joined the Land Rover Owners Club of Gippsland which he has been a member of for over 25 years. Ted drove a Land Rover Discovery 2. He made all new members feel welcome by his warm and open approach. I quickly learned Ted's knowledge about Land Rovers was considerable and that his knowledge was not limited to cars. Many of our Club members had conversations with Ted on many subjects and we were always amazed at his wealth of knowledge. Ted was an old school gentleman who was always respectful to the young and old. He did have one vice that we all knew of, but it did mean he was easy to find if your nose was working. Personally, I enjoyed the scent of his smokey veil. Ted and Shirley travelled with the Club on many occasions and there are several stories I could relate to you but time is limited so maybe just a few.



Our club has a week away each November and members are allocated a job. Ted took on the quiz which was a great hit and is still done today. I might add Shirley baked the greatest savoury scones which have not been replicated. Ted and Shirley have not been able to travel with us for a few years and their company is missed. In 2014 Ted and Shirley came to Mansfield with the Club and on one of our outings we stopped at the Hunt Club Hotel in Merrijig, and there, on the wall, we found a photo of Ted. It was a spitting image and we concluded Ted had been here before, or he had a twin be never new about or this father had a fast bike and got around. Ted never let on which was the case. In 2017 we travelled to Port Macdonnell in South Australia. It was here that Ted showed us his surgical skills by taking out the pocket knife that was always on his belt and extracted a tic from his very trusting friend Jim Hood. No one else admitted to having a tic after that. In 2018 we travelled to Moruya NSW where the club has ran a charades competition and Ted was given the movie 101 Dalmatians to act out. Well, he got down on all fours and started to lift his hind leg trying to get the image of a dog across to his team who were laughing so much he had to stop and re think his strategy. To this day I don't remember if his team recovered and got the clue but the image of Ted cocking his hind leg is legendary in our Club. I would like to finish by remembering a characteristic Ted demonstrated constantly. This was the love and affection he showed for Shirley, and I am sure Shirley, it is comforting to have such memories of Ted. We wont forget him.


By Appointment to the late King George VI
Manufacturers of Land-Rovers
The Rover Co. Ltd

To the casual glance two more dissimilar vehicles
 could not be imagined. Yet the stocky Land-Rover
 receives the same careful attention in machining
 and construction as does its elegant companion.
 And the Rover Seventy-Five, with all its grace,
 is as tough and sturdy as the Land-Rover. Fitness
 for purpose is the keynote of both.


 Alike in Craftsmanship

Queen Elizabeth's 110,000 Mile Range Rover Is Heading to Auction

A third-generation Land Rover Range Rover with a unique history is now up for auction. It is a creation from the company's Special Vehicle Operations designed for Queen Elizabeth II. Video footage shows Her Majesty driving the SUV, and now you can feel like royalty, too.

The 2004 Land Rover features some distinct modifications you wouldn't usually find in its products. The rear doors each have two window switches so that one person in the back can operate both without leaning over to the other side. It also has grab handles for the rear-seat passengers that work with the side steps to assist with entry and exit.

The Epsom Green Range Rover has a Sand Hide interior that the Queen protected with front and rear seat covers. It also has a dog guard separating the passenger compartment and cargo hold with a cage. The SUV also has a modified front grille with covert lights and mudguards to help keep the Queen's ride clean.

The car was first registered in 2004 in the UK. The vehicle has a comprehensive service history, undergoing its first in April 2005. It was recently serviced in July. It has nearly 110,000 miles on the odometer, with the company's 4.4-liter engine residing under the hood. Land Rover rated it at making 282 horsepower when it was new almost 20 years ago.

There have been attempts to verify the vehicle's provenance over the years, but Iconic Auctioneers has video footage of Her Majesty behind the wheel of the Land Rover, which it will share upon request. The SUV wears the

same number plate – BN04 EPU.

Queen Elizabeth II died in September 2022 at the age of 96. She reigned for 70 years, becoming the UK's longest-serving monarch. She was spotted multiple times driving herself, often behind the wheel of a Land Rover, although she was spotted in 2021 piloting a green Jaguar wagon around Windsor Castle. Her love of driving resulted in an outpouring of condolences from automakers around the world.

The live auction for the 2004 Land Rover will happen Sunday, November 11, at the NEC Classic Motor Show Sale 2023 in England.

Check out the listing and gallery at Iconic Auctioneers



Massive parts shortage affects 10,000 Jaguars, Land Rovers - report

JLR's workshops in the UK are reportedly at "breaking point" due to a massive parts shortage and the company has run out of courtesy vehicles.

According to a report out of the UK from Car Dealer magazine, as many as 10,000 Jaguar and Land Rover vehicles are affected in some way by the shortage, and 5000 of those vehicles are off the road.

We've contacted JLR to confirm what impact this parts shortage has had, if any, on the company's Australian operations.

The dire situation was reportedly addressed by UK client care director Andrew Woolliscroft at a summit with JLR's dealership network.

"We've run out of cars to put clients into and we've run out of space to park the cars waiting on parts," he reportedly told the conference.

It was reportedly revealed at the summit that the problem wouldn't get any better for at least another six weeks.

Jaguar Land Rover is reportedly grappling with centralising its parts supply network, which Mr Woolliscroft has admitted to being a "mess".

In addition to combining what were several separate warehouses into one distribution centre dubbed Mercia Park, JLR is also in the process of switching suppliers.

"Mercia is a bottleneck and we have a backlog of orders," Mr Woolliscroft reportedly told dealer network attendees.

"We have a backlog inbound – as of today we have 80 lorries waiting to unload. We have a backlog in packing, as

those parts are unboxed and packed into the warehouse." "And we have a backlog outbound as those orders are picked, packed and dispatched."

He added that JLR was "throwing everything" at the problem and that the UK was the "number one priority ahead of any other market".

Mr Woolliscroft reportedly apologised and admitted "most of the time it is not that we don't have the part, it's just jammed in the system".

Due to the shortage of parts and the flow-on effect of JLR exhausting its loan car fleet, many customers have been left in the lurch.

Car Dealer magazine reports that one customer who owns a 2017 Range Rover Velar has been stranded for four months. The car reportedly suffered a minor impact which caused the driver assistance radar to fail.

The car has reportedly been unable to be driven ever since, with Land Rover communicating that it'll be another 1-1.5 months before the part is located. Car Dealer magazine reports many more customers have been affected in similar ways.

"As we deliver our commitment to become carbon net zero across our supply chain, products, and operations by 2039, we are streamlining parts distribution from multiple locations to one global super centre," a JLR spokesperson told Car Dealer magazine

"This transition has unfortunately caused some temporary delays to the delivery of parts to our retailers."

Jaguar Land Rover's new electric vehicle testing facility in the UK's Motor City

These are the first images of Jaguar Land Rover's new Future Energy Lab – a state-of-the-art electric vehicle testing site in Coventry that will secure 200 jobs for the future and create 150 new jobs in the region.

The facility, which opened on Monday, is part of the British manufacturer's efforts to bring nine all-electric luxury cars to market by 2030 to catch up with rivals such as Tesla.

The site is in the West Midlands – historically Britain's automotive capital, where Coventry is known as the UK's Motor City – and is costing £250 million. It will enable "rapid testing of electric vehicles" to accelerate JLR's electrification timeline.

The new 323,000 square meter facility is located at JLR's Whitley Engineering Centre and features more than £40 million of technological innovations, including electrical test benches, electric drive unit manufacturing and test cells for EV systems. This includes a range of extreme weather climate chambers capable of simulating the harshest conditions – from -40°C to 55°C – to ensure JLR's electric cars of the future can withstand all climates.

The facility is part of JLR's wider £15 billion investment to electrify its luxury brands over the next five years.

This includes introducing the first all-electric Range Rover by the end of next year and transforming Jaguar into an all-electric premium car brand by 2026.

JLR hopes the site will enable sustainable scaling of its next-generation electric vehicles and reduce the need to transport cars across other global test facilities during the development process.

"By increasing its capacity to test electric vehicles on-site, JLR is minimizing the costs and emissions associated with sending fleets of prototype vehicles around the world for test evaluations," the brand says.

JLR is planning further investment worth £22m next year to further modernize its Coventry site. This follows JLR parent Tata's confirmation in July that it would build a massive £4bn "gigafactory" in Somerset to produce batteries to power these future electric car models, also from around 2026 when the system is to go into operation.

By producing its own batteries, JLR can avoid the post-Brexit export tariffs that will be imposed on EU and UK carmakers from next year, which will make the average electric vehicle £3,400 more expensive than it is today. From January 1, exports of electric cars between the UK and the EU will be subject to originating duties of 10 percent if at least 45 percent of their value does not come from the UK or EU.

Since batteries are the largest cost factor for any electric

JLR Reports Strong Sales In Q3 2023

British luxury marque, JLR, reports an increased sales volumes as well as high demands for its most profitable models during the second quarter of FY24 (Q3 2023 or three-month period to 30 September 2023).

During the three-month period to 30 September 2023, wholesale volumes reached 96,817 units (+29%), excluding the Chery Jaguar Land Rover China JV, and up 4% compared to the quarter ended 30 June 2023.

For the first half of the financial year, wholesale volumes reached 190,070 (+29%) while retail sales for the second quarter were 106,561 units (+21%), including sales from



vehicle, it is crucial for manufacturers to create their own production centers domestically.

JLR bosses say the EV testing lab will also create 150 new jobs in the region – an economic boost for the West Midlands

Commenting on the opening of the new EV test lab, Thomas Mueller, Executive Director of Product Engineering at JLR, said: "Our vehicles are and will remain at the forefront of an all-electric automotive future."

"This facility, a key part of our Reimagine strategy, is critical to providing the advanced testing capabilities that will be critical to the performance and reliability of the modern luxury vehicles we proudly develop."

Oliver Boakes, chief engineer responsible for powertrain development at the company, added: "Our Whitley operation is at the heart of JLR – itself a leader in the local community – so this test facility is another jewel in our journey there." an all-electric future.

Chery Jaguar Land Rover China JV).

The company said retail volumes were also higher in all regions year-on-year : Overseas up 56%, North America up 32%, Europe up 16%, UK up 9% and China up 7%. Based on preliminary cash balances, JLR expects positive free cash flow of around £300 million in Q2 FY24.

The order book remains strong at 168,000 units at the end of the second quarter (from 185,000 at the end of the first quarter), with demand for its most profitable Range Rover, Range Rover Sport and Defender models accounting for 77% of the orders.

Land Rover Defender PHEV arrives in Oz

JAGUAR LAND ROVER Australia used the Sydney SXSW (South x South West) futurist, music, film and tech festival/conference to officially unveil its Defender PHEV to the Australian market, bringing to a neat half-dozen the number of PHEVs in Land Rover's local line-up.

As the name suggests, the Defender 110 P400e, available in 2.0 X-Dynamic SE spec from \$126,275 and 2.0 HSE spec from \$137,975 (both excluding on road costs), is built on a Defender 110 mid-wheelbase five-door platform and is capable of providing zero tailpipe emissions with "true off-road capability".

Land Rover already offers various PHEV powertrains in Discovery Sport, Evoque, Velar, Range Rover Sport and Range Rover. The Defender PHEV shares the same powertrain as the Velar which costs around \$5000 more.

The new electrified, Slovakian-built "fourbie" is similar in many ways to Jeep's Grand Cherokee Summit Reserve 4XE that sells from \$129,950 +ORC.

And like Jeep, Land Rover Australia says, "the unstoppable Defender 110 P400e plug-in electric hybrids offer the ultimate zero-emissions off-road capability with its ability to tap into its incredible power and control on any terrain when operating in electric-only mode."

Only available with the 110, the Defender PHEV is claimed to deliver a blend of performance and economy while also being the most capable and durable electrified Land Rover. This is enabled through the heavy-duty, off-road design and construct of the full-size Defender which in the PHEV model is capable of being driven in low range 4x4 purely in EV-mode. Under the chunky body, the Defender PHEV runs an electric traction motor teamed with a 2.0-litre petrol four-cylinder turbocharged engine delivering a combined 297kW of power and 640Nm of torque driving both axles (AWD) through an eight speed conventional automatic transmission. A 19.2kWh battery using electrons at the claimed rate of 26.1kWh/100km feeds into the system that may deliver around 43km pure electric range (WLTP) while the combined petrol/electric WLTP fuel consumption rate is a claimed 3.4 litres per 100km with CO2 emissions of 78g/km. The 2600kg vehicle can accelerate from 0-100km/h in 5.6 seconds, has a towing capacity of 3000kg and has attained a five-star ANCAP crash rating.



"Music for me has always been about finding new inspiration, upcoming artists that inspire me. Embracing the impossible is what binds Defender and music, breaking new ground and embracing all kinds of adventures," said JLR Australia managing director, Penny Ferguson.

Mirroring competitor brand's, JLR premiered in Sydney something called "Defender House" that it said is "a unique journey into the Defender lifestyle offering a blend of specially curated events and exclusive driving experiences", where "guests will experience the Defender electric hybrid and explore its integrated connectivity with product experts, as well as partake in bespoke sensory experiences and gourmet food".

At SXSW, JLR is capitalising on the Defender's renowned capability and "exceptional" all-terrain adventures while "now exploring a musical world it has much in common with". JLR says "Defender enthusiasts and clients are known for having a great passion for music and will be inspired through innovative collaborations with artists such as Tkay appearing at SXSW".

From Defender House guests were invited to "take over the city" and embark on a unique test drive around the city and over the iconic Sydney Harbour Bridge in the Defender 110 electric hybrid.

One of few plug-in electric hybrids capable of rapid DC charging, the Defender 110 plug-in electric hybrid can charge 0 - 80 per cent in about 30 minutes using a rapid DC charger rated at 50kW or above.

At home, it can charge 0 - 100 per cent in approximately 2.5 hours using a 7kW AC charger.

Sale of late Prince Philip's Land Rover helped spark record-busting year for celeb car sales

The sale of the late Prince Philip's custom-made Land Rover helped spark a record-breaking boom in auctions of celebrity motors this year. Millions of pounds have been made so far in 2023 on the back of the sales, which have included hammers going down on cars featured in the 'The Professionals' and 'The Avengers'. Rob Hubbard, managing director of Iconic Auctioneers, said the firm had hoped for "some magic" from its recent series of sales of high-profile vehicles, but said they had been left "deeply" pleased with the resulting profits pulled in at various auctions this year.

In February, a Land Rover Defender built to an exacting specification requested by The Duke of Edinburgh – who died aged 99 in 2021, sold at auction for a world record figure of £123,750. Bidding easily eclipsed the £50,000 to £70,000 guide price for the 2010 4X4 model first owned by Prince Philip and the sale of the Keswick Green Defender

was likely a huge shock to the previous keeper who sold the car to the vendor in 2022 for £44,000. It means the seller has almost doubled their money, pocketing £79,750 profit in less than a year. Other car auction highlights from this year spotlighted by Iconic Auctioneers included the business' sale of a pair of classic Ford Capri made famous in an iconic 1970's TV show have sold for over £160,000 at auction. The two models are the actual cars that featured in the British crime series 'The Professionals' between 1977 and 1981. They were driven by the characters Ray Doyle and William Bodie, played by Martin Shaw and Lewis Collins. The 1955 Lotus Elan S3 Drophead Coupé driven by Diana Rigg's Emma Peel character in 'The Avengers' also sold this year, for £164,250. It had been gifted to Diana, who died aged 82 in 2020, was given the car after she finished starring in 51 episodes of the 1960s spy show.

Land Rover Owners' Club of Gippsland Ordinary Meeting

Minutes for meeting held on Monday 4th September 2023.
Meeting held at Gippsland Land Rover, Traralgon.
Meeting started at: 8:02 pm

Welcome & thanks.

Alan welcomed everyone and thanked them for their attendance.

Vale Shirley Little 14/8/23

Attending; Graham Shaw-Wash, Ian Blake, Alan Harlow, Terry Heskey, Brian Johnson, Alan MacRae, Bob McKee, Craig Murray, Jan Parniak, Eric Shingles, Tonee Harlow, Helen MacRae, Annette Fleming, Colette Parniak

Apologies: Charlie Calafiore, Rod Catchpole, Ross Howell, John Kerr, Greg Rose, Neville Trimnell, Loris Catchpole, Sue Howell, Heather Kerr, Lois Rose, Liz Trimnell

Confirmation of Meeting Minutes:

Motion; That the May Club minutes be accepted as true and correct.

Moved by Bob McKee, Seconded by Brian Johnson, Carried Business arising from the minutes of the previous meeting.

Nil

Correspondence:

In:

Various emails from FWDV.

Answers to track watch and membership.

Out:

Relevant emails received have been sent onto members.

Reminders of club meeting email and text.

Future events list email from Alan MacRae.

FWDV re track watch magazine.

FWDV re requirement to use temporary membership.

Treasurer's Report: John Kerr

Questions of Treasure

Motion; The Treasurer's reports be received and approved,

Moved by Tonee Harlow, Seconded by Alan MacRae, Carried

Publicity Officer's Report: Charlie Calafiore.

Charlie is OS.

Editor's Report: Eric Shingles.

Hope you liked the Newsletter always looking for more stuff.

Thanks to those contributing.

Webmaster's Report: Alan Harlow.

The web site is up to date.

	Visitors	Pages
Feb	10	40
March	9	42
April	16	65
May	8	12
June	3	5
July	5	37
Aug	11	17

FWDV Delegate's Report: Neville Trimnell

No meetings to report on.

FWDV Regional Representatives; Greg Rose

No report.

Property officer Report; Ross Howell

No change.

Past Events.

Winter Wanderers by Bob Mackee

* Sunday 18th June: the trip to Yarram and Port Albert for a social drive to have Fish and Chips plus other excellent snacks. Was cancelled due to low numbers.

* Sunday 23 July

Walhalla Witchery Café for cake & coffee, Lunch was available for those who wish to carry on a bit longer.

Great day 12 attended, coffee followed by lunch at the pub and a walk through the town.

* Sunday 23th August

Noojee pub for lunch. Great day 11 attended, good lunch followed by walk to river and coffee back in the pub.

Events Coordinator's Report: Alan MacRae

Future Events.

* Friday 15th September; Coffee morning organised by Jan Parniak

Location will be Eat, live fresh, Contingent street Trafalgar at 10am.

* September 29 – October 9; Trip to the South Australian Land Rover Jamboree, Blinman, SA. Organizer: Alan MacRae

* Monday October 2nd; LROCG Ordinary Meeting at Gippsland Land Rover

* November 2 - November 9

LROCG Melbourne Cup Trip – Warrnambool, Vic Surfside RV park. Organizers: Alan Harlow, Alan MacRae, John Kerr and Liz Trimnell.

Individual roles.

Booking site and group contact.

Alan & Tonee — Done

Organising Melbourne cup sweep.

Alan & Tonee —Yes

Quiz Tuesday

Helen MacRae —Yes

Melbourne cup food co-ordinator.

Heather Kerr

Ordering chooks and salads from Woolworths

Heather Kerr

Friday trip to TBA

Saturday Park Run 5km (can walk)

Wash

Saturday breakfast booking

Saturday short local outing to Hopkins Falls

Saturday tea at Hotel motel bistro. TBC on the trip.

Sunday trip, TBC on trip.

Monday coffee booking free day.

Group

Monday evening local 4x4 Club pub tea & meeting

Alan —Yes

Tuesday site preparation.

Group

Wednesday trip TBC on the trip.

* November 13, LROCG AGM at 8pm at Gippsland Land Rover.

November 20-22; Clean Up Days With Parks Victoria, organizer Craig Murray

Attendees so far; Bob & Annette, Greg & Lois, Craig & Vivian, Ian Blake, Neville Trimnell, Gary Fouet

* December 3; Club Christmas Breakup

Technical Matters:

* Wash family member van chassis snapped near Kalgoorlie

* Alan MacRae sister's van rear axle broke near Rockhampton.

* Alan Harlow emergency break on Discover 4 had to be replaced.

General Business.

* Motion that the LROCG to provide the evening meal on the Clean up Day (20th Nov) Annette Flemming to organize meat and salads. Moved by Annette Fleming. Seconded by Bob McKee, Passed.

* Associate Membership

Alan raised the idea of creating an associate membership. Association may determine that a lower annual subscription is payable by associate members. Pay the local Club component only. Currently \$25

Land Rover Owners' Club of Gippsland Ordinary Meeting

Minutes for meeting held on Monday 2nd October 2023.

Meeting held at Gippsland Land Rover, Traralgon.

Meeting started at: 8: 17 pm

Welcome & thanks.

Alan welcomed everyone and thanked them for their attendance.

Vale Ted Allchin, 1st May 1944 to 10th September 2023.

Ted's funeral was held on the 15th September.

Attending; Jessica Walsh, Philip Croft, Jan Parniak, Craig Murray, Bob McKee, Alan MacRae, John Kerr, Shaun Johnson, Brian Johnson, Ross Howell, Terry Heskey, Alan Harlow, Rod Catchpole, Ian Blake, Graham Shaw-Wash, Christine Croft, Colette Parniak, Annette Fleming, Helen MacRae, Heather Kerr, Siobahn Walker, Robert Atkins, Sue Howell, Toney Harlow, Loris Catchpole, Gary Fouet

Apologies; Liz Trimnell, Neville Trimnell, Eric Shingles, Greg Rose, Ray Massaro, Charlie Calafiore, Lois Rose, Vivian Lee

Confirmation of Meeting Minutes:

Motion; That the September Club minutes be accepted as true and correct.

Moved by Helen MacRae. Seconded by Brian Johnson. Carried.

Business arising from the minutes of the previous meeting. Association membership to be covered in general business.

Correspondence:

In:

Various emails from FWDV.

Track Watch.

Notice of AGM for FWDV.

Out:

Relevant emails received have been sent onto members.

Reminders of Club meeting email and text.

Future events list email from Alan MacRae.

FWDV track watch magazine.

First aid course opportunity. No takers.

Would have voting rights

Only have Insurance cover if a full member of another Club.

May not get Track Watch if not a member of another Club.

Must pay temporary membership if attending a Club trip and not a member of another club..

May attend social gatherings but would have no insurance.

The idea will continue to be explored with particular interest in what defines a trip and what are we actually cover for as members.

* To ensure club members continue to get TrackWatch approval was given to provide members postal address to FWDV.

* Charlie will be away for October's meeting. Adam Dyer to fill in.

* Neville is planning a trip to Cape York in 2024 between May and July and would welcome company on trip.

* AGM will be at November meeting

Meeting closed at 9:21 pm.

Next Meeting:

Treasurer's Report: John Kerr

Questions of Treasurer, Nil

Motion; The Treasurer's reports be received and approved, Moved by John Kerr. Seconded by Bob McKee. Carried

Publicity Officer's Report: Charlie Calafiore.

Charlie is OS.

Editor's Report: Eric Shingles.

Eric would have said; Hope you liked the Newsletter always looking for more stuff.

Or, When you get your newsletter, hope you like it. Thanks to those contributing.

Webmaster's Report: Alan Harlow.

The web site is up to date.

	Visitors	Pages
March	9	42
April	16	65
May	8	12
June	3	5
July	5	37
Aug	11	17
Sept	16	75

FWDV Delegate's Report: Neville Trimnell

No meetings to report on.

FWDVP Regional Representatives; Greg Rose

No report.

Property officer Report; Ross Howell

No change.

Past Events.

Nil. Coffee morning cancelled due to Ted's funeral.

Events Coordinator's Report: Alan MacRae

Future Events.

* Friday 13th October, Coffee morning; Jan Parniak;

Location; Eat, live fresh, Contingent st. Trafalgar.

Time, 10am

* November 2 - November 9th

LROCG Melbourne Cup Trip – Warrnambool, Vic Surfside RV park, Organizers: Alan Harlow, Alan MacRae, John Kerr and Liz Trimnell

Individual roles.

Booking site and group contact.

Alan & Tonee-Done

Organising Melbourne cup sweep.

Alan & Tonee-Yes

Quiz Tuesday

Helen MacRae-Yes

Melbourne cup food co-ordinator.

Heather Kerr

Ordering chooks and salads from Woolworths

Heather Kerr

Friday pm trip to Hopkins Falls

Saturday Park Run 5km (can walk)

Wash-done

Saturday breakfast booking

Saturday LROCV Lismore

Wash-done

Saturday tea at Hotel motel bistro.

Sue-done

Sunday trip-TBC on trip

Monday coffee booking free day

Monday evening local 4x4 Club pub tea & meeting

Alan-Yes

Tuesday site preparation.

Group

Wednesday trip?-TBC on the trip.

* November 13, LROCG AGM at 8pm at Gippsland Land Rover.

* November 20-22, Clean Up Days With Parks Victoria, organized by Craig Murray

Attendees so far; Bob & Annette, Greg & Lois, Craig & Vivian, Neville Trimnell, Gary Fouet

* December 3, LROCG Christmas Breakup. at Erica @ 11am

* December 10th possible Club trip to Jericho. Craig Murray.

Technical Matters:

John Kerr had glow plug amber alarm, fix was to replace battery.

General Business.

* Motion; Club to supply BBQ lunch of sausages and salads for December Christmas meeting. Alan Harlow to arrange. Moved by Bob McKee, Seconded by Annette Fleming, Passed.

* Jessica provided 3 map books and 3 LR magazines for Club members to help themselves to.

* Associate Membership

Alan raised the idea of creating an associate membership. Association may determine that a lower annual subscription is payable by associate members. Pay the local Club component only. Currently \$25
Would have voting rights

Only have Insurance cover if a full member of another Club.
May not get Track Watch if not a member of another Club.
Must pay temporary membership if attending a Club trip and not a member of another club.

May attend social gatherings but would have no insurance.
As requested, Alan found what we are covered for and how much. He also clarified that the \$15 temporary membership covered a 12 month period. The following is an extract from

the FWDV web site.

COMBINED PUBLIC & PRODUCT LIABILITY INSURANCE

Description of Business:

Events and activities of Four Wheel Drive Victoria that have been approved as Four Wheel Drive Victoria and/or Club Activities, including but not limited to community volunteer work, training days, events, four wheel drive trips, attendance at and participation in trade shows, expos and club association meetings and events.

Insured:

Four Wheel Drive Victoria and its affiliated Clubs and Members.

Limit of Liability:

Public Liability \$20,000,000

Products Liability \$20,000,000

Property in Physical or Legal \$250,000

Control of the Insured Deductible: \$1,500 each and every claim

Key point;

Any person, including a member, has the right to make a claim against the policy if they are injured or have suffered damage to their property at a FWDV/Affiliated Club approved event, provided that the injury or damage to property is the result of FWDV and/or its Affiliated Clubs' negligence. This includes bodily injury or damage to property caused by another member of FWDV and/or its Affiliated Clubs.

Alan to develop notice of motion for AGM after pole showed that idea was acceptable to the majority.

* Ross thanked Alan Harlow for speaking on behalf of the Club at Ted's funeral.

* With Charlie away for October's meeting, we had Adam Dyer fill in.

* Neville planning a trip to Cape York in 2024 between May and July and would welcome company on trip.

* AGM to be held at our next meeting on the 13th November.

Nominations for Club committee now open.

Nomination forms to be returned to Alan Harlow 2 weeks before (30th Oct) the AGM on November the 13th.

Meeting closed at 9:17 pm.

Next Meeting:

Monday 13th November; This will be our AGM, held at Gippsland Land Rover at 8pm.

Pre meeting meal from 6pm at Morwell Italian Club.

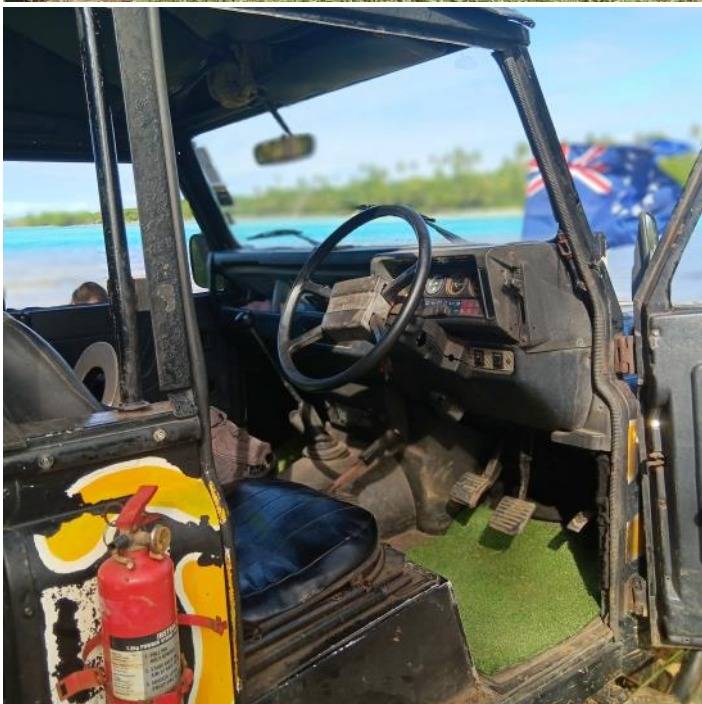
Please RSVP to Bob McKee by the Friday prior.

Ph: 0407 963 176 or E: bobmckee46@gmail.com.



I walk around like I'm ok, but deep down inside I wanna buy another Land Rover

Alan & Tonee Harlow sent in some pictures from their off road trip while in the Cook Islands in an early High Capacity Pick-up Land Rover.



Clean Up Days With Parks Victoria

Dates: Monday the 20th , Tuesday the 21st and Wednesday the 22nd of November.

Location: North of Licola in the Alpine National Park.

Trip Leaders:

Craig Murray for LROCG. Wayne Foon, Parks Victoria ranger, Foothills and Southern Alps Team, Heyfield.

Meeting Place: Thomastown camping area on Kelly lane

Meeting Time: 10am

Details:

This will be similar to previous working bees with Parks Victoria and the Land Rover Owners' Club of Gippsland. It is a fantastic opportunity to provide some community service and enjoy the best of the high country in late spring.

Rangers will conduct a safety and risk assessment briefing prior to any work commencing. Parks Victoria staff will have identified areas of work and tasks prior to the day. These could include: general cleanup around camping areas on Kellys Lane and the two huts accessed by that track, cleanup at Bryces Gorge carpark and Howitt Hut on the Howitt Road, cleanup at the Horseyards and Horseyard Hut, erecting of new signs at the Pinnacles and other areas as identified, checking intentions books at various walks and visitors books at huts. The work is easy paced and will not take anyone out of their comfort zone.

What to bring:

Road worthy vehicle with good tyres and basic recovery gear. A UHF radio, though not essential, is highly recom-

mended for convoy communication.

Food:

Monday: Snacks for morning and afternoon, lunch, drinks and something to bar-b-que for the evening meal. There will be a large bar-b-que plate please bring some salads and dessert to share.

Tuesday: Breakfast, snacks for morning and afternoon, drinks, lunch. Parks Victoria will provide the evening meal.

Wednesday: Breakfast, snacks, drinks, lunch.

Water: Bring your own water for drinking, cooking, washing, etc.

It is O.K. to bring some "refreshing beverages" to accompany dinners.

Fuel: From Licola we will not be travelling vast distances but allow for at least two hundred kilometres.

Clothing. Be prepared for four seasons, this is the high country! Good solid footwear is a must. Sun hats, sunscreen, gloves for working, etc.

Other: Camping gear for the overnight stay. Food for lunch on Monday, Tuesday and Wednesday, breakfast Thursday and snacks, etc. Drinks for the two days. A camera, sense of adventure and a couple of good yarns for Wednesday night.

NOTE: As numbers and names have to be carefully recorded by Parks Victoria and the type and the number of participants dictates scope of work we can do could you please let me know, as soon as possible, if you would like to be involved in this activity.

Warrnambool Parkrun

Parkrun is about participating in an exercise at a level of activity that suits you. How strenuous is it? There are some who run flat out and manage to finish the 5km in under 20 minutes while there are some who take up to 1 hour. And many, many more in between.

Warrnambool parkrun is very close to Surfside Holiday Park and is a 5km out and back course that begins and finishes in the Lake Pertobe Adventure Park, with the course running east alongside the lake before joining up with the Lake Pertobe Trail.

My journey? I started at Berwick Springs (29) where I was interrupted by Covid. I moved to Traralgon (50) and I have done a few others around the country (15). While pre-Covid saw me reaching for the 42-minute mark, I now finish close on 50 minutes each week, and not that far off the tail end.

My 6yo granddaughter has done 14 Parkruns and her time is around the 1 hour mark (lots of flowers to pick along the way) while Alan MacRae has completed 72 Parkruns (Traralgon 57,

others 15) and has managed a fastest time of just under 40 minutes, usually a minute or so slower.

You can register on the Parkrun website (<https://www.parkrun.com.au/>) and get a barcode to scan at the finish so that your time is recorded. This is emailed to you and allows you to see how you are doing over time, how many Parkruns you have done and where you have done them.



Land Rover History

From the 'Warragul/Drouin Gazette' August 27 1996



New Discovery – more value for the same price

Land Rover has managed to do what few other car makers have – it has introduced an updated version of a model with significant improvements to standard features without increasing the price.

The popular Land Rover Discovery has carved a niche for itself in the four wheel drive market since its release in Australia about five years ago.

Land Rover combined the heritage of its name with its experience building luxury four wheel drives (the Range Rover) and an off-road work-horse (the Defender), and developed a truly distinctive four wheel drive.

The Discovery has few peers in the recreational vehicle market. And now with the updated version released earlier this year, the Discovery brings a level of standard features and safety unsurpassed in its class. And all without an increase in price over the previous model.

Available in either three or five door, the Discovery offers a choice of a V8 petrol engine, or diesel that features cutting edge engine technology.

The all alloy 3.9 litre V8i engine produces 134kW of power at 4750rpm and 304Nm of torque at 2600rpm.

The 2.5 litre diesel has 83kW of power at 4000rpm and 265Nm of torque at a useable 1800rpm, which gives this off roader welcomed agility around town.

Both engines are available with either a four speed automatic or five speed manual transmission. The Discovery uses long travel coil springs all round to provide maximum comfort and control on and off road, while there are also double acting shock absorbers and dual rate rear springs.

The base three door model has a generous range of standard equipment, including air conditioning, power steering, tinted glass, cloth trim, metallic paint, electric front windows and electric mirrors, while dual airbags are an optional.

The five door Discovery comes with all those, but also has dual airbags, electric rear windows, height adjustable front seatbelts, alloy wheels, bigger tyres and anti lock brakes. Optional extras include a CD player and seven seat capacity. The range topping ES model comes with everything – a new six stacker CD player, auto dimming rear mirror, two electric glass sunroofs, seven seats, front fog-lights, leather trim, ABS and dual airbags. Cruise control is standard on V8i models.



DISCOVERY

THE BENCHMARK HAS JUST GOT BETTER!



Standard Equipment on all 5 door models

- Twin SRS Airbags
- Anti-lock braking system
- Alloy wheels
- 235 section tyres
- Remote central locking and alarm
- Integrated door rails

THE ONLY THING WE HAVEN'T ADDED IS THE PRICE RISE

Proud sponsors of Land Rover Owners Club of Gippsland

GIPPSLAND'S HOME OF LAND ROVER



MASSARO MOTORS

PRINCES HIGHWAY, MORWELL (051) 34 1422

CONTACT CHARLIE CALAFIORE OR FAX (0511) 33 7053

• SALES • SERVICE • GENUINE PARTS • PAINT AND PANEL LMCT 407



Land Rover History



The five door V8i manual is \$49 120, or add another \$1840 for automatic transmission. The five door Tdi manual is \$49 960 and \$51 800 for the auto.

All Discovery models come with a two year/50 000 kilometre warranty and a two year customer assistance plan, as well as 24 hour roadside assistance.

The Land Rover Discovery is one of the safest four wheel drives around.

The dual airbags fitted to the Discovery are specifically designed to suit a four wheel drive. It is a far more complex system than that found in a passenger car, because the four wheel drive is often subjected to shocks and impacts off road which could trigger airbags not designed for such conditions. Aside from the dual airbags, the ladder frame chassis design allows for the fuel tank to be contained in its own safety cage which reduces the risk of damage in an accident.

Land Rover brings unsurpassed experience and design skills to every vehicle it makes. They are designed to be the most practical, efficient and reliable vehicles on the road.



Airlifting Land Rovers



TIFFANY JONES



From 'The Herald', Saturday June 23, 1973. I've never seen this cartoon strip before, perhaps some of our older members might remember it, but thought it interesting since it has a Range Rover in it. Wikipedia tells us; Tiffany Jones was a British comic strip that ran in syndication between 1964 and 1977 and was pub-

lished in Daily Sketch. The series centred on a young woman who travelled to London to become a fashion model. It is notable for being created by two female comic strip artists, Pat Tourret and Jenny Butterworth. The series was popular enough to inspire a 1973 comedy film, Tiffany Jones.

Some words of wisdom from Blakie

I named my dog ten miles so that I can tell people that I walk ten miles everyday.
 The opposite of good is good intentions.
 I'm looking to buy a 2nd hand light house, nothing too flashy.
 What if the only reason dogs lick you is because they know there are bones under your skin?
 Never trust an electrician with no eyebrows.
 Fish bite twice a day ... before you get there and after you leave.
 The opposite of good is good intentions.
 I'm looking to buy a 2nd hand light house, nothing too flashy.
 What if the only reason dogs lick you is because they know there are bones under your skin?
 Never trust an electrician with no eyebrows.
 Fish bite twice a day ... before you get there and after you leave.
 A wombat is not a bat.
 Life was much easier when apple and blackberry were just fruits.
 If you think money doesn't bring you happiness then transfer it into my account.
 Do they allow loud laughing in Hawaii ... or just a low ha.
 My life coach just told me I didn't make the team.
 Are the two e's in bee actually silent?
 The secret to looking younger is telling people that you are older.
 Tomorrow is Jamaican hairstyle day, I'm dreading it.
 The first annual meeting of camouflage club was a disaster. It looks like no one showed up.
 I changed my car horn to gunshot sounds. Now people move out of the way faster.
 As I suspected, someone has been adding soil to my garden.
 The plot thickens.

LAND ROVER

BIGGER & BETTER
 THE NEW '1954' MODEL
 MORE CARRYING CAPACITY . . . 86 INCH WHEELBASE

Since its introduction in 1948 the Land-Rover has taken the world as its proving ground and successfully accomplished every task set for it. Now this all-purpose, go-anywhere, four-wheel drive vehicle takes another step forward with a longer wheelbase and a longer body giving 25% more carrying capacity and a steadier ride, and a more comfortable driving compartment in which particular attention has been paid to thorough weather-proofing and adequate ventilation. The control pedals and gear lever are re-positioned for easier operation, and other new features include a new carrying bracket for the spare wheel that leaves the body floor completely flat, flush-fitting exterior door handles, and a new instrument panel with easily read instruments and extremely handy parcel shelves. Increased driving comfort.

GO ANYWHERE — DO ANYTHING VEHICLE

The Land-Rover has a 4-cylinder, 2-litre engine, two power take-off points (centre and rear), eight forward speeds and two reverse, and can be driven in four-wheel or in two-wheel drive in high transfer gear, but is permanently in four-wheel drive when in low transfer. The rear power take-off is suitable for shaft-driven or belt-driven machinery, farm implements, etc., and the centre power take-off will operate via vee belts, generators, compressors, crop-sprayers and other equipment mounted in the body of the vehicle. A hoist winch is available, designed for a 2,500 lb. (1,135 Kg.) pull, and the vehicle will haul loads many times its own weight.

"THE WORLD'S MOST VERSATILE VEHICLE"

The Land-Rover is justifiably claimed to be "the world's most versatile vehicle". Comfortable, fast and economical on the road—and equally at home across the roughest country—infinity adaptable for agricultural work or in industry, tremendously tough and a positive glutton for work, this amazing vehicle will go anywhere and take almost any job in its stride. Priced at only £950 plus sales tax if applicable.

Towing
Rick Building
Ploughing
Roof Cutting

Regent Motors PTY. LTD.
 86 STURT STREET, SOUTH MELBOURNE

COUNTRY DEALERS:

ALBURY, N.W.M. Motors, Main Street	Phone 488	COORAWA, N.W.M. J. W. Upton, Derwent Street	Phone 411	KEANG, East Motors, Fitzroy Street	Phone 418	ST. ARNAUD, W. B. Storer & Son, Main Street	Phone 38
ALEXANDRIA, Thomas Emery, Victoria Street	Phone 174	CORRYWANG, E. B. Brown, Box 25	Phone 9	KYARRAM, East End Garage, Launceston	Phone 58	SWAN HILL, Murray Valley Eng. & Transport Co.	Phone 191 & 191
BOURKE, Bowman's Motors, 177 (17) Barkly Street	Phone 431	COWANG, E. B. Brown, Box 25	Phone 158	LAUNCESTON, Tasmania, Anglo-Asian Pty. Ltd., 317 George St.	Phone 395	TEANAKA, Teanaka Valley, Main Street	Phone 112
BULLIOU, MARRIS, E. W. Phillips, Main Street	Phone 141	DUNDEE, W. J. Entwistle, 10 Lonsdale Street	Phone 221	LONGLEYS, Wymondley Road, Hongkong	Phone 365	TATARA, J. B. Ross, Main Street	Phone 131
BUSHMILL, Gibson's Motors, 179 Main Street	Phone 51	DUNDEE, N.W.M. Rural Supply Co., 11 Napier Street	Phone 40	LONGVIEW, A. C. Ellis, 144 Mansfield Street, Main Street	Phone 35	THE CHIVAL, N.W.M. D. Cowie, Macquarie Street	Phone 127
BULLOCK, Central Motors, Victoria Street, 311 North St.	Phone 214	DUNDEE, Edmondson Bros., 101 High Street	Phone 1	LOUGHAN, N.W.M. G. J. Mansfield, Gibson Industries, High Street	Phone 11	TRARALGON, Latchford, Kingsley Bros. Ltd., 54 Prince Street	Phone 114
BURKIN, N.W.M. - Avon Motors, P.O. Box 12	Phone 4	DUNDEE, Edmondson Bros., 101 High Street	Phone 84	MANSFIELD, Gibson Industries, High Street	Phone 171	WARRAGLE, Eastern Motors, Murray Street	Phone 27
BUSSELL, New South & Sub. Phone 711		ELGIN, Papua and District Trading Co.	Phone 178	MILDURA, Wilson Motors, Langtree Avenue	Phone 544	WARRAGLE, Warragle Bus Lines, Bourke Street	Phone 114
BUSSELL, E. B. Jones & Sons, 40 Riverina Street	Phone 1106	GERALDINE, F. Percell & Co., 10 Midway Street	Phone 701	MOE, Val Alton's Garage, Langtree Avenue	Phone 11	WARRAGLE, Warragle Bus Lines, Bourke Street	Phone 114
BUSSELL, Tasmania Emery, 179 Main Street	Phone 38	HAMILTON, J. K. Gamble & Co., Thomas and French Streets	Phone 411	MOE, Val Alton's Garage, Langtree Avenue	Phone 11	WARRAGLE, Warragle Bus Lines, Bourke Street	Phone 114
EVERING, Baxter & Mill, Jackson Street	Phone 271	HOBART, Tasmania, Hamilton Garage Pty. Ltd., 12 Argyle Street	Phone 1107	NEWCASTLE, Paton Bros. Hill Street	Phone 46	WARRAGLE, Warragle Bus Lines, Bourke Street	Phone 114
CAULFIELD, N. Smart, 8 (1) Central Street	Phone 118	HOBART, Tasmania, Hamilton Garage Pty. Ltd., 12 Argyle Street	Phone 1107	NEWCASTLE, Paton Bros. Hill Street	Phone 46	WARRAGLE, Warragle Bus Lines, Bourke Street	Phone 114
CAULFIELD, Millard Motors, 111 Murray Street	Phone 68	HOBART, Tasmania, Hamilton Garage Pty. Ltd., 12 Argyle Street	Phone 1107	NEWCASTLE, Paton Bros. Hill Street	Phone 46	WARRAGLE, Warragle Bus Lines, Bourke Street	Phone 114
		HOBART, Tasmania, Hamilton Garage Pty. Ltd., 12 Argyle Street	Phone 1107	NEWCASTLE, Paton Bros. Hill Street	Phone 46	WARRAGLE, Warragle Bus Lines, Bourke Street	Phone 114
		HOBART, Tasmania, Hamilton Garage Pty. Ltd., 12 Argyle Street	Phone 1107	NEWCASTLE, Paton Bros. Hill Street	Phone 46	WARRAGLE, Warragle Bus Lines, Bourke Street	Phone 114
		HOBART, Tasmania, Hamilton Garage Pty. Ltd., 12 Argyle Street	Phone 1107	NEWCASTLE, Paton Bros. Hill Street	Phone 46	WARRAGLE, Warragle Bus Lines, Bourke Street	Phone 114
		HOBART, Tasmania, Hamilton Garage Pty. Ltd., 12 Argyle Street	Phone 1107	NEWCASTLE, Paton Bros. Hill Street	Phone 46	WARRAGLE, Warragle Bus Lines, Bourke Street	Phone 114
		HOBART, Tasmania, Hamilton Garage Pty. Ltd., 12 Argyle Street	Phone 1107	NEWCASTLE, Paton Bros. Hill Street	Phone 46	WARRAGLE, Warragle Bus Lines, Bourke Street	Phone 114
		HOBART, Tasmania, Hamilton Garage Pty. Ltd., 12 Argyle Street	Phone 1107	NEWCASTLE, Paton Bros. Hill Street	Phone 46	WARRAGLE, Warragle Bus Lines, Bourke Street	Phone 114
		HOBART, Tasmania, Hamilton Garage Pty. Ltd., 12 Argyle Street	Phone 1107	NEWCASTLE, Paton Bros. Hill Street	Phone 46	WARRAGLE, Warragle Bus Lines, Bourke Street	Phone 114
		HOBART, Tasmania, Hamilton Garage Pty. Ltd., 12 Argyle Street	Phone 1107	NEWCASTLE, Paton Bros. Hill Street	Phone 46	WARRAGLE, Warragle Bus Lines, Bourke Street	Phone 114
		HOBART, Tasmania, Hamilton Garage Pty. Ltd., 12 Argyle Street	Phone 1107	NEWCASTLE, Paton Bros. Hill Street	Phone 46	WARRAGLE, Warragle Bus Lines, Bourke Street	Phone 114
		HOBART, Tasmania, Hamilton Garage Pty. Ltd., 12 Argyle Street	Phone 1107	NEWCASTLE, Paton Bros. Hill Street	Phone 46	WARRAGLE, Warragle Bus Lines, Bourke Street	Phone 114
		HOBART, Tasmania, Hamilton Garage Pty. Ltd., 12 Argyle Street	Phone 1107	NEWCASTLE, Paton Bros. Hill Street	Phone 46	WARRAGLE, Warragle Bus Lines, Bourke Street	Phone 114
		HOBART, Tasmania, Hamilton Garage Pty. Ltd., 12 Argyle Street	Phone 1107	NEWCASTLE, Paton Bros. Hill Street	Phone 46	WARRAGLE, Warragle Bus Lines, Bourke Street	Phone 114
		HOBART, Tasmania, Hamilton Garage Pty. Ltd., 12 Argyle Street	Phone 1107	NEWCASTLE, Paton Bros. Hill Street	Phone 46	WARRAGLE, Warragle Bus Lines, Bourke Street	Phone 114
		HOBART, Tasmania, Hamilton Garage Pty. Ltd., 12 Argyle Street	Phone 1107	NEWCASTLE, Paton Bros. Hill Street	Phone 46	WARRAGLE, Warragle Bus Lines, Bourke Street	Phone 114
		HOBART, Tasmania, Hamilton Garage Pty. Ltd., 12 Argyle Street	Phone 1107	NEWCASTLE, Paton Bros. Hill Street	Phone 46	WARRAGLE, Warragle Bus Lines, Bourke Street	Phone 114
		HOBART, Tasmania, Hamilton Garage Pty. Ltd., 12 Argyle Street	Phone 1107	NEWCASTLE, Paton Bros. Hill Street	Phone 46	WARRAGLE, Warragle Bus Lines, Bourke Street	Phone 114
		HOBART, Tasmania, Hamilton Garage Pty. Ltd., 12 Argyle Street	Phone 1107	NEWCASTLE, Paton Bros. Hill Street	Phone 46	WARRAGLE, Warragle Bus Lines, Bourke Street	Phone 114
		HOBART, Tasmania, Hamilton Garage Pty. Ltd., 12 Argyle Street	Phone 1107	NEWCASTLE, Paton Bros. Hill Street	Phone 46	WARRAGLE, Warragle Bus Lines, Bourke Street	Phone 114
		HOBART, Tasmania, Hamilton Garage Pty. Ltd., 12 Argyle Street	Phone 1107	NEWCASTLE, Paton Bros. Hill Street	Phone 46	WARRAGLE, Warragle Bus Lines, Bourke Street	Phone 114
		HOBART, Tasmania, Hamilton Garage Pty. Ltd., 12 Argyle Street	Phone 1107	NEWCASTLE, Paton Bros. Hill Street	Phone 46	WARRAGLE, Warragle Bus Lines, Bourke Street	Phone 114
		HOBART, Tasmania, Hamilton Garage Pty. Ltd., 12 Argyle Street	Phone 1107	NEWCASTLE, Paton Bros. Hill Street	Phone 46	WARRAGLE, Warragle Bus Lines, Bourke Street	Phone 114
		HOBART, Tasmania, Hamilton Garage Pty. Ltd., 12 Argyle Street	Phone 1107	NEWCASTLE, Paton Bros. Hill Street	Phone 46	WARRAGLE, Warragle Bus Lines, Bourke Street	Phone 114
		HOBART, Tasmania, Hamilton Garage Pty. Ltd., 12 Argyle Street	Phone 1107	NEWCASTLE, Paton Bros. Hill Street	Phone 46	WARRAGLE, Warragle Bus Lines, Bourke Street	Phone 114
		HOBART, Tasmania, Hamilton Garage Pty. Ltd., 12 Argyle Street	Phone 1107	NEWCASTLE, Paton Bros. Hill Street	Phone 46	WARRAGLE, Warragle Bus Lines, Bourke Street	Phone 114
		HOBART, Tasmania, Hamilton Garage Pty. Ltd., 12 Argyle Street	Phone 1107	NEWCASTLE, Paton Bros. Hill Street	Phone 46	WARRAGLE, Warragle Bus Lines, Bourke Street	Phone 114
		HOBART, Tasmania, Hamilton Garage Pty. Ltd., 12 Argyle Street	Phone 1107	NEWCASTLE, Paton Bros. Hill Street	Phone 46	WARRAGLE, Warragle Bus Lines, Bourke Street	Phone 114
		HOBART, Tasmania, Hamilton Garage Pty. Ltd., 12 Argyle Street	Phone 1107	NEWCASTLE, Paton Bros. Hill Street	Phone 46	WARRAGLE, Warragle Bus Lines, Bourke Street	Phone 114
		HOBART, Tasmania, Hamilton Garage Pty. Ltd., 12 Argyle Street	Phone 1107	NEWCASTLE, Paton Bros. Hill Street	Phone 46	WARRAGLE, Warragle Bus Lines, Bourke Street	Phone 114
		HOBART, Tasmania, Hamilton Garage Pty. Ltd., 12 Argyle Street	Phone 1107	NEWCASTLE, Paton Bros. Hill Street	Phone 46	WARRAGLE, Warragle Bus Lines, Bourke Street	Phone 114
		HOBART, Tasmania, Hamilton Garage Pty. Ltd., 12 Argyle Street	Phone 1107	NEWCASTLE, Paton Bros. Hill Street	Phone 46	WARRAGLE, Warragle Bus Lines, Bourke Street	Phone 114
		HOBART, Tasmania, Hamilton Garage Pty. Ltd., 12 Argyle Street	Phone 1107	NEWCASTLE, Paton Bros. Hill Street	Phone 46	WARRAGLE, Warragle Bus Lines, Bourke Street	Phone 114
		HOBART, Tasmania, Hamilton Garage Pty. Ltd., 12 Argyle Street	Phone 1107	NEWCASTLE, Paton Bros. Hill Street	Phone 46	WARRAGLE, Warragle Bus Lines, Bourke Street	Phone 114
		HOBART, Tasmania, Hamilton Garage Pty. Ltd., 12 Argyle Street	Phone 1107	NEWCASTLE, Paton Bros. Hill Street	Phone 46	WARRAGLE, Warragle Bus Lines, Bourke Street	Phone 114
		HOBART, Tasmania, Hamilton Garage Pty. Ltd., 12 Argyle Street	Phone 1107	NEWCASTLE, Paton Bros. Hill Street	Phone 46	WARRAGLE, Warragle Bus Lines, Bourke Street	Phone 114
		HOBART, Tasmania, Hamilton Garage Pty. Ltd., 12 Argyle Street	Phone 1107	NEWCASTLE, Paton Bros. Hill Street	Phone 46	WARRAGLE, Warragle Bus Lines, Bourke Street	Phone 114
		HOBART, Tasmania, Hamilton Garage Pty. Ltd., 12 Argyle Street	Phone 1107	NEWCASTLE, Paton Bros. Hill Street	Phone 46	WARRAGLE, Warragle Bus Lines, Bourke Street	Phone 114
		HOBART, Tasmania, Hamilton Garage Pty. Ltd., 12 Argyle Street	Phone 1107	NEWCASTLE, Paton Bros. Hill Street	Phone 46	WARRAGLE, Warragle Bus Lines, Bourke Street	Phone 114
		HOBART, Tasmania, Hamilton Garage Pty. Ltd., 12 Argyle Street	Phone 1107	NEWCASTLE, Paton Bros. Hill Street	Phone 46	WARRAGLE, Warragle Bus Lines, Bourke Street	Phone 114
		HOBART, Tasmania, Hamilton Garage Pty. Ltd., 12 Argyle Street	Phone 1107	NEWCASTLE, Paton Bros. Hill Street	Phone 46	WARRAGLE, Warragle Bus Lines, Bourke Street	Phone 114
		HOBART, Tasmania, Hamilton Garage Pty. Ltd., 12 Argyle Street	Phone 1107	NEWCASTLE, Paton Bros. Hill Street	Phone 46	WARRAGLE, Warragle Bus Lines, Bourke Street	Phone 114
		HOBART, Tasmania, Hamilton Garage Pty. Ltd., 12 Argyle Street	Phone 1107	NEWCASTLE, Paton Bros. Hill Street	Phone 46	WARRAGLE, Warragle Bus Lines, Bourke Street	Phone 114
		HOBART, Tasmania, Hamilton Garage Pty. Ltd., 12 Argyle Street	Phone 1107	NEWCASTLE, Paton Bros. Hill Street	Phone 46	WARRAGLE, Warragle Bus Lines, Bourke Street	Phone 114
		HOBART, Tasmania, Hamilton Garage Pty. Ltd., 12 Argyle Street	Phone 1107	NEWCASTLE, Paton Bros. Hill Street	Phone 46	WARRAGLE, Warragle Bus Lines, Bourke Street	Phone 114
		HOBART, Tasmania, Hamilton Garage Pty. Ltd., 12 Argyle Street	Phone 1107	NEWCASTLE, Paton Bros. Hill Street	Phone 46	WARRAGLE, Warragle Bus Lines, Bourke Street	Phone 114
		HOBART, Tasmania, Hamilton Garage Pty. Ltd., 12 Argyle Street	Phone 1107	NEWCASTLE, Paton Bros. Hill Street	Phone 46	WARRAGLE, Warragle Bus Lines, Bourke Street	Phone 114
		HOBART, Tasmania, Hamilton Garage Pty. Ltd., 12 Argyle Street	Phone 1107	NEWCASTLE, Paton Bros. Hill Street	Phone 46	WARRAGLE, Warragle Bus Lines, Bourke Street	Phone 114
		HOBART, Tasmania, Hamilton Garage Pty. Ltd., 12 Argyle Street	Phone 1107	NEWCASTLE, Paton Bros. Hill Street	Phone 46	WARRAGLE, Warragle Bus Lines, Bourke Street	Phone 114
		HOBART, Tasmania, Hamilton Garage Pty. Ltd., 12 Argyle Street	Phone 1107	NEWCASTLE, Paton Bros. Hill Street	Phone 46	WARRAGLE, Warragle Bus Lines, Bourke Street	Phone 114
		HOBART, Tasmania, Hamilton Garage Pty. Ltd., 12 Argyle Street	Phone 1107	NEWCASTLE, Paton Bros. Hill Street	Phone 46	WARRAGLE, Warragle Bus Lines, Bourke Street	Phone 114
		HOBART, Tasmania, Hamilton Garage Pty. Ltd., 12 Argyle Street	Phone 1107	NEWCASTLE, Paton Bros. Hill Street	Phone 46	WARRAGLE, Warragle Bus Lines, Bourke Street	Phone 114
		HOBART, Tasmania, Hamilton Garage Pty. Ltd., 12 Argyle Street	Phone 1107	NEWCASTLE, Paton Bros. Hill Street	Phone 46	WARRAGLE, Warragle Bus Lines, Bourke Street	Phone 114
		HOBART, Tasmania, Hamilton Garage Pty. Ltd., 12 Argyle Street	Phone 1107	NEWCASTLE, Paton Bros. Hill Street	Phone 46	WARRAGLE, Warragle Bus Lines, Bourke Street	Phone 114
		HOBART, Tasmania, Hamilton Garage Pty. Ltd., 12 Argyle Street	Phone 1107	NEWCASTLE, Paton Bros. Hill Street	Phone 46	WARRAGLE, Warragle Bus Lines, Bourke Street	Phone 114
		HOBART, Tasmania, Hamilton Garage Pty. Ltd., 12 Argyle Street	Phone 1107	NEWCASTLE, Paton Bros. Hill Street	Phone 46	WARRAGLE, Warragle Bus Lines, Bourke Street	Phone 114
		HOBART, Tasmania, Hamilton Garage Pty. Ltd., 12 Argyle Street	Phone 1107	NEWCASTLE, Paton Bros. Hill Street	Phone 46	WARRAGLE, Warragle Bus Lines, Bourke Street	Phone 114
		HOBART, Tasmania, Hamilton Garage Pty. Ltd., 12 Argyle Street	Phone 1107	NEWCASTLE, Paton Bros. Hill Street	Phone 46	WARRAGLE, Warragle Bus Lines, Bourke Street	Phone 114
		HOBART, Tasmania, Hamilton Garage Pty. Ltd., 12 Argyle Street	Phone 1107	NEWCASTLE, Paton Bros. Hill Street	Phone 46	WARRAGLE, Warragle Bus Lines, Bourke Street	Phone 114
		HOBART, Tasmania, Hamilton Garage Pty. Ltd., 12 Argyle Street	Phone 1107	NEWCASTLE, Paton Bros. Hill Street	Phone 46	WARRAGLE, Warragle Bus Lines, Bourke Street	Phone 114
		HOBART, Tasmania, Hamilton Garage Pty. Ltd., 12 Argyle Street	Phone 1107	NEWCASTLE, Paton Bros. Hill Street	Phone 46	WARRAGLE, Warragle Bus Lines, Bourke Street	Phone 114
		HOBART, Tasmania, Hamilton Garage Pty. Ltd., 12 Argyle Street	Phone 1107	NEWCASTLE, Paton Bros. Hill Street	Phone 46	WARRAGLE, Warragle Bus Lines, Bourke Street	Phone 114
		HOBART, Tasmania, Hamilton Garage Pty. Ltd., 12 Argyle Street	Phone 1107	NEWCASTLE, Paton Bros. Hill Street	Phone 46	WARRAGLE, Warragle Bus Lines, Bourke Street	Phone 114
		HOBART, Tasmania, Hamilton Garage Pty. Ltd., 12 Argyle Street	Phone 1107	NEWCASTLE, Paton Bros. Hill Street	Phone 46	WARRAGLE, Warragle Bus Lines, Bourke Street	Phone 114
		HOBART, Tasmania, Hamilton Garage Pty. Ltd., 12 Argyle Street	Phone 1107	NEWCASTLE, Paton Bros. Hill Street	Phone 46	WARRAGLE, Warragle Bus Lines, Bourke Street	Phone 114
		HOBART, Tasmania, Hamilton Garage Pty. Ltd., 12 Argyle Street	Phone 1107	NEWCASTLE, Paton Bros. Hill Street	Phone 46	WARRAGLE, Warragle Bus Lines, Bourke Street	Phone 114
		HOBART, Tasmania, Hamilton Garage Pty. Ltd., 12 Argyle Street	Phone 1107	NEWCASTLE, Paton Bros. Hill Street	Phone 46	WARRAGLE, Warragle Bus Lines, Bourke Street	Phone 114
		HOBART, Tasmania, Hamilton Garage Pty. Ltd., 12 Argyle Street	Phone 1107	NEWCASTLE, Paton Bros. Hill Street	Phone 46	WARRAGLE, Warragle Bus Lines, Bourke Street	Phone 114
		HOBART, Tasmania, Hamilton Garage Pty. Ltd., 12 Argyle Street	Phone 1107	NEWCASTLE, Paton Bros. Hill Street	Phone 46	WARRAGLE, Warragle Bus Lines, Bourke Street	Phone 114
		HOBART, Tasmania, Hamilton Garage Pty. Ltd., 12 Argyle Street	Phone 1107	NEWCASTLE, Paton Bros. Hill Street	Phone 46	WARRAGLE, Warragle Bus Lines, Bourke Street	Phone 114
		HOBART, Tasmania, Hamilton Garage Pty. Ltd., 12 Argyle Street	Phone 1107	NEWCASTLE, Paton Bros. Hill Street	Phone 46	WARRAGLE, Warragle Bus Lines, Bourke Street	Phone 114
		HOBART, Tasmania, Hamilton Garage Pty. Ltd., 12 Argyle Street	Phone 1107	NEWCASTLE, Paton Bros. Hill Street	Phone 46	WARRAGLE, Warragle Bus Lines, Bourke Street	Phone 114
		HOBART, Tasmania, Hamilton Garage Pty. Ltd., 12 Argyle Street	Phone 1107	NEWCASTLE, Paton Bros. Hill Street	Phone 46	WARRAGLE, Warragle Bus Lines, Bourke Street	Phone 114
		HOBART, Tasmania, Hamilton Garage Pty. Ltd., 12 Argyle Street	Phone 1107	NEWCASTLE, Paton Bros. Hill Street	Phone 46	WARRAGLE, Warragle Bus Lines, Bourke Street	Phone 114
		HOBART, Tasmania, Hamilton Garage Pty. Ltd., 12 Argyle Street	Phone 1107	NEWCASTLE, Paton Bros. Hill Street	Phone 46	WARRAGLE, Warragle Bus Lines, Bourke Street	Phone 114
		HOBART, Tasmania, Hamilton Garage Pty. Ltd., 12 Argyle Street	Phone 1107	NEWCASTLE, Paton Bros. Hill Street	Phone 46	WARRAGLE, Warragle Bus Lines, Bourke Street	Phone 114
		HOBART, Tasmania, Hamilton Garage Pty. Ltd., 12 Argyle Street	Phone 1107	NEWCASTLE, Paton Bros. Hill Street	Phone 46	WARRAGLE, Warragle Bus Lines, Bourke Street	Phone 114
		HOBART, Tasmania, Hamilton Garage Pty. Ltd., 12 Argyle Street	Phone 1107	NEWCASTLE, Paton Bros. Hill Street	Phone 46	WARRAGLE, Warragle Bus Lines, Bourke Street	Phone 114
		HOBART, Tasmania, Hamilton Garage Pty. Ltd., 12 Argyle Street	Phone 1107	NEWCASTLE, Paton Bros. Hill Street	Phone 46	WARRAGLE, Warragle Bus Lines, Bourke Street	Phone 114
		HOBART, Tasmania, Hamilton Garage Pty. Ltd., 12 Argyle Street	Phone 1107	NEWCASTLE, Paton Bros. Hill Street	Phone 46	WARRAGLE, Warragle Bus Lines, Bourke Street	Phone 114
		HOBART, Tasmania, Hamilton Garage Pty. Ltd., 12 Argyle Street	Phone 1107	NEWCASTLE, Paton Bros. Hill Street	Phone 46	WARRAGLE, Warragle Bus Lines, Bourke Street	Phone 114
		HOBART, Tasmania, Hamilton Garage Pty. Ltd., 12 Argyle Street	Phone 1107	NEWCASTLE, Paton Bros. Hill Street	Phone 46	WARRAGLE, Warragle Bus Lines, Bourke Street	Phone 114
		HOBART, Tasmania, Hamilton Garage Pty. Ltd., 12 Argyle Street	Phone 1107	NEWCASTLE, Paton Bros. Hill Street	Phone 46	WARRAGLE, Warragle Bus Lines, Bourke Street	Phone 114
		HOBART, Tasmania, Hamilton Garage Pty. Ltd., 12 Argyle Street	Phone 1107	NEWCASTLE, Paton Bros. Hill Street	Phone 46	WARRAGLE, Warragle Bus Lines, Bourke Street	Phone 114
		HOBART					

Gippsland History



The Penny Tree, Fumina,

The 'Penny Tree' was a hollow tree in Gippsland that Nicholas Penny and his family lived in circa 1907. The photograph taken by M. Lowenhardt Studio features John Green (neighbour), Mrs Eva Penny sitting inside the tree holding Charlie, May (holding a cat), George and Mr Nicolas Penny (with a dog).

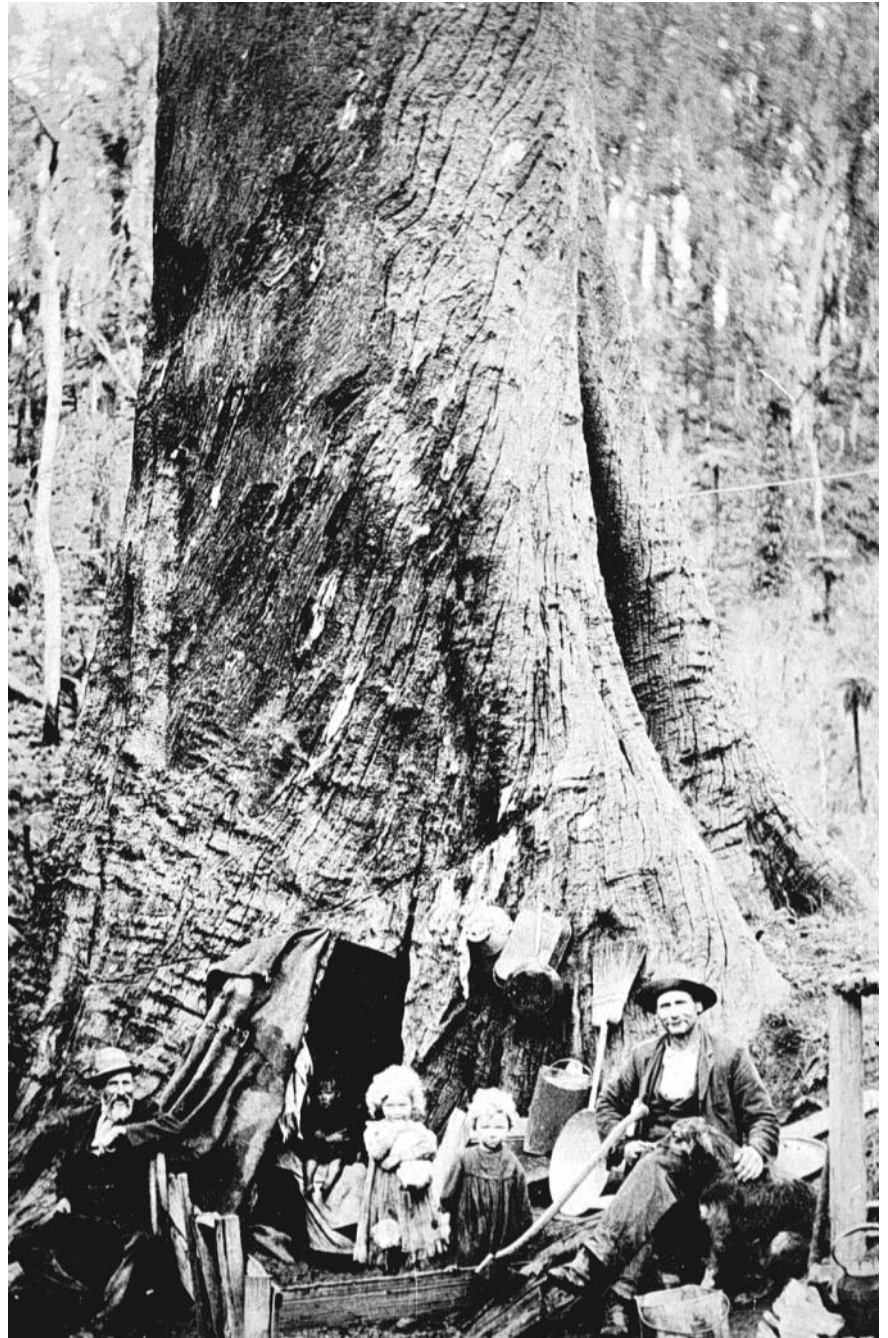
The family lived in the hollowed-out butt for nine months in 1906-1907. It was 20 feet across at floor level with 12 feet of head room inside. Nicholas Penny ring-barked the tree in 1905, with it being 130 feet high with the top broken off. The fires the following year destroyed the tent in which he was living and hollowed out the tree. After "making a few alterations" Penny moved in and brought his wife and children across from Outtrim. They later built a more permanent home.

The tree was destroyed in the 1926 bushfires.'
Caption and image Museums Victoria

A Multi-Use Tree

Below, A group of men, women and children are gathered outside a huge tree stump after a church service held inside. The stump was at Mount Square Top, north of Foster and was 80 feet 6 inches in circumference.

It was situated on Mr Clemson's land on the Boolarra - Foster road. Inside diameter was 26ft. It held 50 people, with room to spare, and was used as a church, school and public hall for some years. The first preacher being Mr Jas. J. Landry. It was burnt in the great fire of 1898.





LAND ROVER OWNERS' CLUB OF GIPPSLAND

LROCG, PO Box 554, TRARALGON 3844. Telephone (03) 51721100 Club website lrocg.jimdo.com

LROCG COMMITTEE NOMINATION FORM

Date ___/___/2023

I _____ (your name) nominate for
the following position/s on the LROCG committee.

Position		Secunder name
President	yes / no	_____
Vic President	yes / no	_____
Treasurer	yes / no	_____
Secretary	yes / no	_____
Minutes Secretary	yes / no	_____
Publicity Officer	yes / no	_____
FWDV Delegate	yes / no	_____
Property Officer	yes / no	_____
Events Co-ordinator	yes / no	_____
Editor	yes / no	_____
Webmaster	yes / no	_____

Instructions

Please cross out or delete "yes" or "no" for each role.

Please print the form and fill in or complete electronically and return to;

LROCG C/O PO Box 554 Traralgon 3844 or Email Atharlow@aussiebroadband.com.au

Nominations close on the 30th October 2023.

This form can be found on the Club web site under the Tab "Forms".